



NATA LIGHTING CO.,LTD.
www.nata.cn
Email:info@nata.com
Tel:+86-750-3770000 Fax:+86-750-3771111
Address:380JinOu Road,GaoXin Zone,Jiang Men City,Guangdong,China

NT

Client:

LumCAT: 1-1378-L

Luminaire: 92.70.427.00

Report No: 20231110-B010

Ballast type: AC

Test No: 20231110-C010

Voltage(V): 34.760

LampCAT: Fortimo_SLM_C_1204

Current(A): 0.320

Lamp flux(lm): 1750.7

Power (W): 11.123

Number of Lamps: 1

PF: 0.000

Length(mm): 0

Width(mm): 0

Phm Type: C

Height(mm): 0

Photometric Results

Lumens(lm): 1592.88, Efficiency(%): 90.99% , Luminous Efficacy(lm/W): 143.21

Central intensity(cd): 5354.215, Maximum intensity(cd): 5354.215

Angle of maximum intensity: C=0.0 γ =0.0

Beam Angle(50%Imax): [C0/180]Total=26.8

[C90/270]Total=26.8

Field angle(10%Imax): [C0/180]Total=55.6

[C90/270]Total=55.6

Maximum s/h(1/2): C0_180=0.45 C90_270=0.45

Maximum s/h(1/4): C0_180=0.48 C90_270=0.48

Up flux rate of lamp(%): 0.00%

Down flux rate of lamp(%): 90.99%

Up flux rate of LUM(%): - -

Down flux rate of LUM(%): 100.00%

CIE Type : Direct lighting

Output flux ratio in π solid angle : 98.023%

Equipment: GMS1980
Temperature(°C): 0.0

Date: 2023/11/10
Humidity(%): 0.0%

Operator: NT07
Distance(m): 7.44

$\gamma(^{\circ})$	Average I(cd)	Zonal F(lm)	Sum F(lm)	Eff Flux(%)	Eff Sum(%)
0.0	5354.215	0.000	0	0.00%	0.00%
1.0	5329.514	5.112	5.112	0.29%	0.32%
2.0	5257.554	15.196	20.308	0.87%	1.27%
3.0	5138.129	24.863	45.171	1.42%	2.84%
4.0	4990.750	33.905	79.075	1.94%	4.96%
5.0	4802.063	42.128	121.203	2.41%	7.61%
6.0	4590.958	49.363	170.566	2.82%	10.71%
7.0	4365.946	55.595	226.162	3.18%	14.20%
8.0	4103.293	60.613	286.774	3.46%	18.00%
9.0	3856.970	64.514	351.288	3.69%	22.05%
10.0	3589.404	67.387	418.675	3.85%	26.28%
11.0	3322.807	69.067	487.742	3.95%	30.62%
12.0	3030.264	69.448	557.19	3.97%	34.98%
13.0	2782.695	68.985	626.175	3.94%	39.31%
14.0	2528.414	67.982	694.157	3.88%	43.58%
15.0	2290.947	66.162	760.319	3.78%	47.73%
16.0	2065.381	63.832	824.152	3.65%	51.74%
17.0	1864.032	61.192	885.343	3.50%	55.58%
18.0	1682.957	58.482	943.825	3.34%	59.25%
19.0	1502.781	55.425	999.251	3.17%	62.73%
20.0	1314.897	51.571	1050.822	2.95%	65.97%
21.0	1187.293	48.047	1098.869	2.74%	68.99%
22.0	1094.991	45.863	1144.733	2.62%	71.87%
23.0	991.604	43.782	1188.515	2.50%	74.61%
24.0	878.053	40.877	1229.393	2.33%	77.18%
25.0	782.935	37.767	1267.16	2.16%	79.55%
26.0	692.038	34.817	1301.977	1.99%	81.74%
27.0	601.763	31.653	1333.63	1.81%	83.72%
28.0	518.532	28.363	1361.993	1.62%	85.51%
29.0	442.981	25.156	1387.149	1.44%	87.08%
30.0	378.854	22.189	1409.339	1.27%	88.48%
31.0	313.606	19.270	1428.609	1.10%	89.69%
32.0	271.696	16.768	1445.377	0.96%	90.74%
33.0	242.483	15.148	1460.525	0.87%	91.69%
34.0	196.581	13.287	1473.812	0.76%	92.53%
35.0	148.022	10.702	1484.514	0.61%	93.20%
36.0	120.858	8.561	1493.076	0.49%	93.73%
37.0	100.612	7.223	1500.299	0.41%	94.19%

$\gamma(^{\circ})$	Average I(cd)	Zonal F(lm)	Sum F(lm)	Eff Flux(%)	Eff Sum(%)
38.0	84.338	6.173	1506.472	0.35%	94.58%
39.0	70.479	5.284	1511.756	0.30%	94.91%
40.0	60.308	4.561	1516.318	0.26%	95.19%
41.0	52.240	4.008	1520.326	0.23%	95.45%
42.0	46.622	3.592	1523.917	0.21%	95.67%
43.0	41.854	3.277	1527.195	0.19%	95.88%
44.0	38.146	3.019	1530.214	0.17%	96.07%
45.0	35.011	2.811	1533.026	0.16%	96.24%
46.0	32.154	2.627	1535.652	0.15%	96.41%
47.0	29.843	2.466	1538.118	0.14%	96.56%
48.0	27.642	2.324	1540.442	0.13%	96.71%
49.0	25.746	2.192	1542.634	0.13%	96.85%
50.0	24.051	2.076	1544.711	0.12%	96.98%
51.0	22.660	1.976	1546.687	0.11%	97.10%
52.0	21.283	1.886	1548.572	0.11%	97.22%
53.0	20.086	1.800	1550.372	0.10%	97.33%
54.0	19.104	1.727	1552.099	0.10%	97.44%
55.0	18.232	1.667	1553.766	0.10%	97.54%
56.0	17.388	1.610	1555.376	0.09%	97.65%
57.0	16.744	1.561	1556.936	0.09%	97.74%
58.0	16.136	1.520	1558.457	0.09%	97.84%
59.0	15.596	1.483	1559.94	0.08%	97.93%
60.0	15.098	1.450	1561.39	0.08%	98.02%
61.0	14.620	1.418	1562.808	0.08%	98.11%
62.0	14.157	1.387	1564.195	0.08%	98.20%
63.0	13.762	1.358	1565.553	0.08%	98.28%
64.0	13.361	1.331	1566.884	0.08%	98.37%
65.0	12.987	1.304	1568.188	0.07%	98.45%
66.0	12.641	1.279	1569.467	0.07%	98.53%
67.0	12.247	1.251	1570.718	0.07%	98.61%
68.0	11.887	1.223	1571.941	0.07%	98.69%
69.0	11.527	1.194	1573.135	0.07%	98.76%
70.0	11.209	1.168	1574.303	0.07%	98.83%
71.0	10.884	1.142	1575.445	0.07%	98.91%
72.0	10.579	1.116	1576.561	0.06%	98.98%
73.0	10.261	1.090	1577.65	0.06%	99.04%
74.0	9.971	1.064	1578.714	0.06%	99.11%
75.0	9.701	1.039	1579.753	0.06%	99.18%

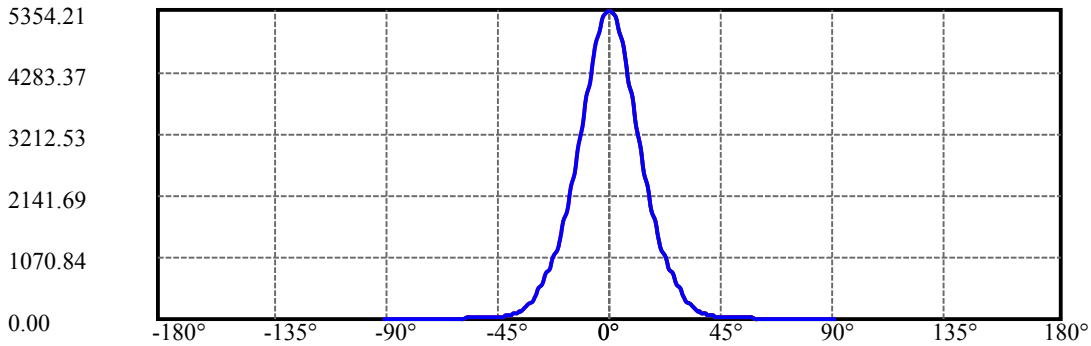
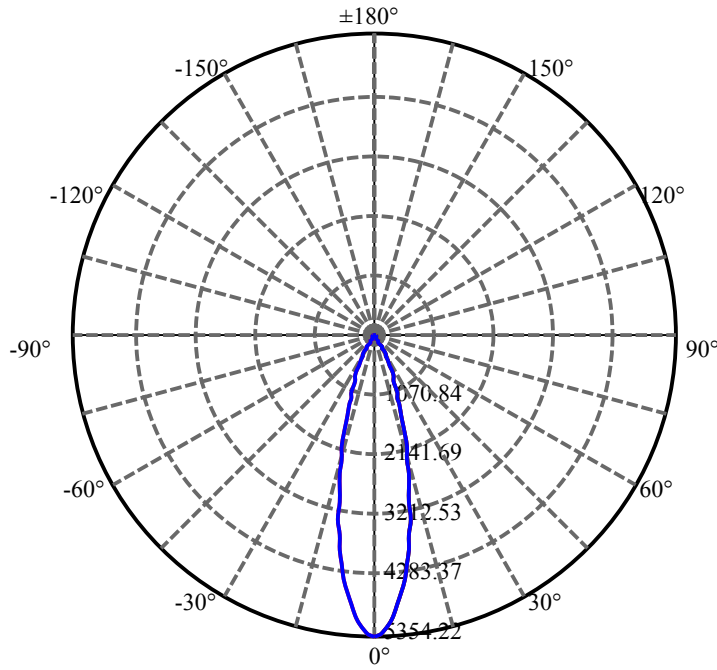
$\gamma(^{\circ})$	Average I(cd)	Zonal F(lm)	Sum F(lm)	Eff Flux(%)	Eff Sum(%)
76.0	9.424	1.015	1580.769	0.06%	99.24%
77.0	9.168	0.991	1581.76	0.06%	99.30%
78.0	8.912	0.968	1582.728	0.06%	99.36%
79.0	8.691	0.946	1583.674	0.05%	99.42%
80.0	8.490	0.926	1584.6	0.05%	99.48%
81.0	8.275	0.907	1585.506	0.05%	99.54%
82.0	8.089	0.887	1586.394	0.05%	99.59%
83.0	7.916	0.870	1587.264	0.05%	99.65%
84.0	7.715	0.852	1588.115	0.05%	99.70%
85.0	7.535	0.832	1588.948	0.05%	99.75%
86.0	7.376	0.815	1589.763	0.05%	99.80%
87.0	7.231	0.799	1590.562	0.05%	99.85%
88.0	7.127	0.786	1591.349	0.04%	99.90%
89.0	6.954	0.772	1592.12	0.04%	99.95%
90.0	6.857	0.757	1592.878	0.04%	100.00%

ZONAL LUMEN SUMMARY

Zone	Lumens	%Lamp	%Fixt
0-30	1409.34	80.50%	88.48%
0-40	1516.32	86.61%	95.19%
0-60	1561.39	89.19%	98.02%
0-90	1592.12	90.94%	99.95%
0-120	1592.12	90.94%	99.95%
0-180	1592.88	90.99%	100.00%
60-90	30.73	1.76%	1.93%
90-120	0.00	0.00%	0.00%
90-130	0.00	0.00%	0.00%
90-150	0.00	0.00%	0.00%
90-180	0.00	0.00%	0.00%
0-25.21	1274.30	72.79%	80.00%

ZONAL LUMEN SUMMARY

0-10	418.67
10-20	632.15
20-30	358.52
30-40	106.98
40-50	28.39
50-60	16.68
60-70	12.91
70-80	10.30
80-90	7.52
90-100	0.00
100-110	0.00
110-120	0.00
120-130	0.00
130-140	0.00
140-150	0.00
150-160	0.00
160-170	0.00
170-180	0.00



C0(Max): —————

C0/C180: —————

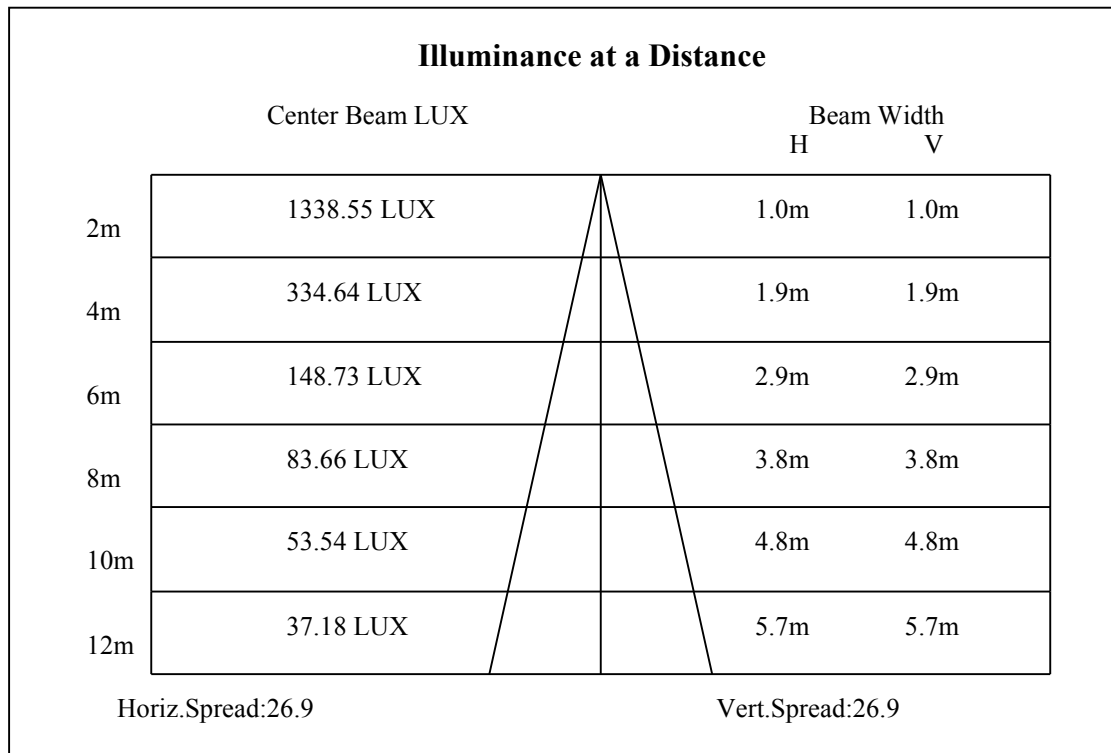
C90/C270: —————

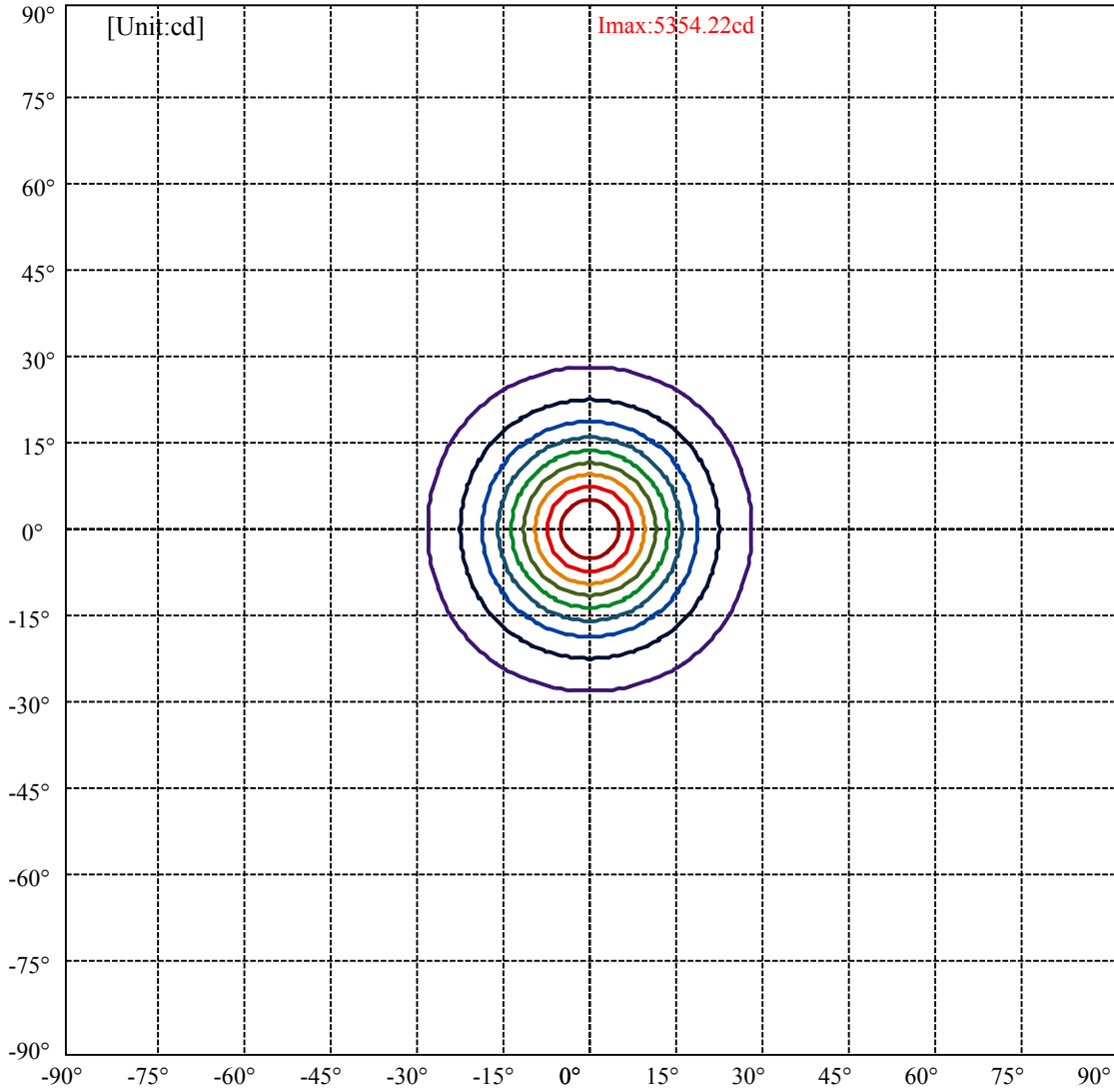
Field angle(10%Imax):C0/180Left:27.8 Right:27.8

:C90/270Left:27.8 Right:27.8

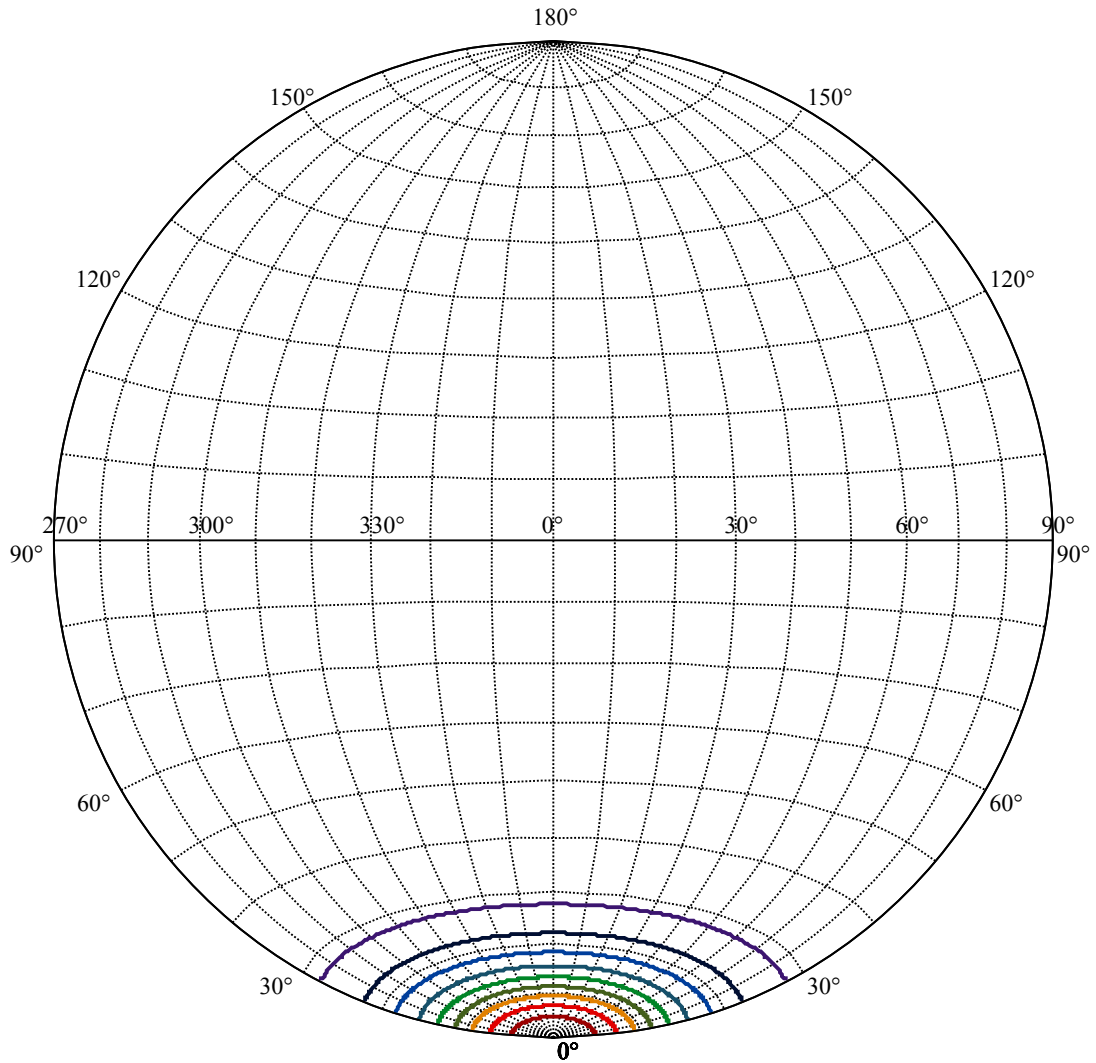
Beam Angle(50%Imax):C0/180Left:13.4 Right:13.4

:C90/270Left:13.4 Right:13.4





(10%Imax) 535.422	—
(20%Imax) 1070.84	—
(30%Imax) 1606.26	—
(40%Imax) 2141.69	—
(50%Imax) 2677.11	—
(60%Imax) 3212.53	—
(70%Imax) 3747.95	—
(80%Imax) 4283.37	—
(90%Imax) 4818.79	—



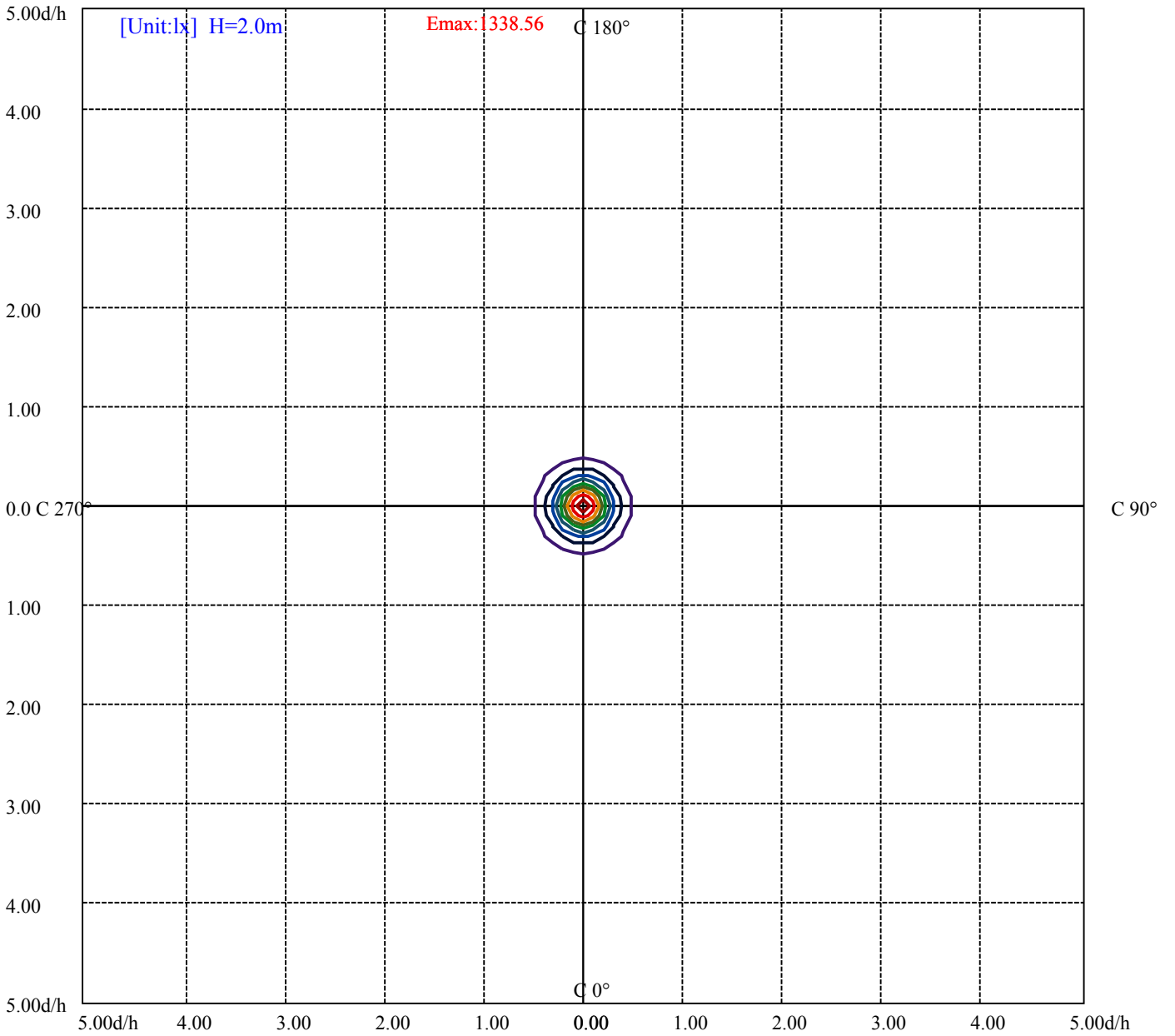
House

[Unit:cd]

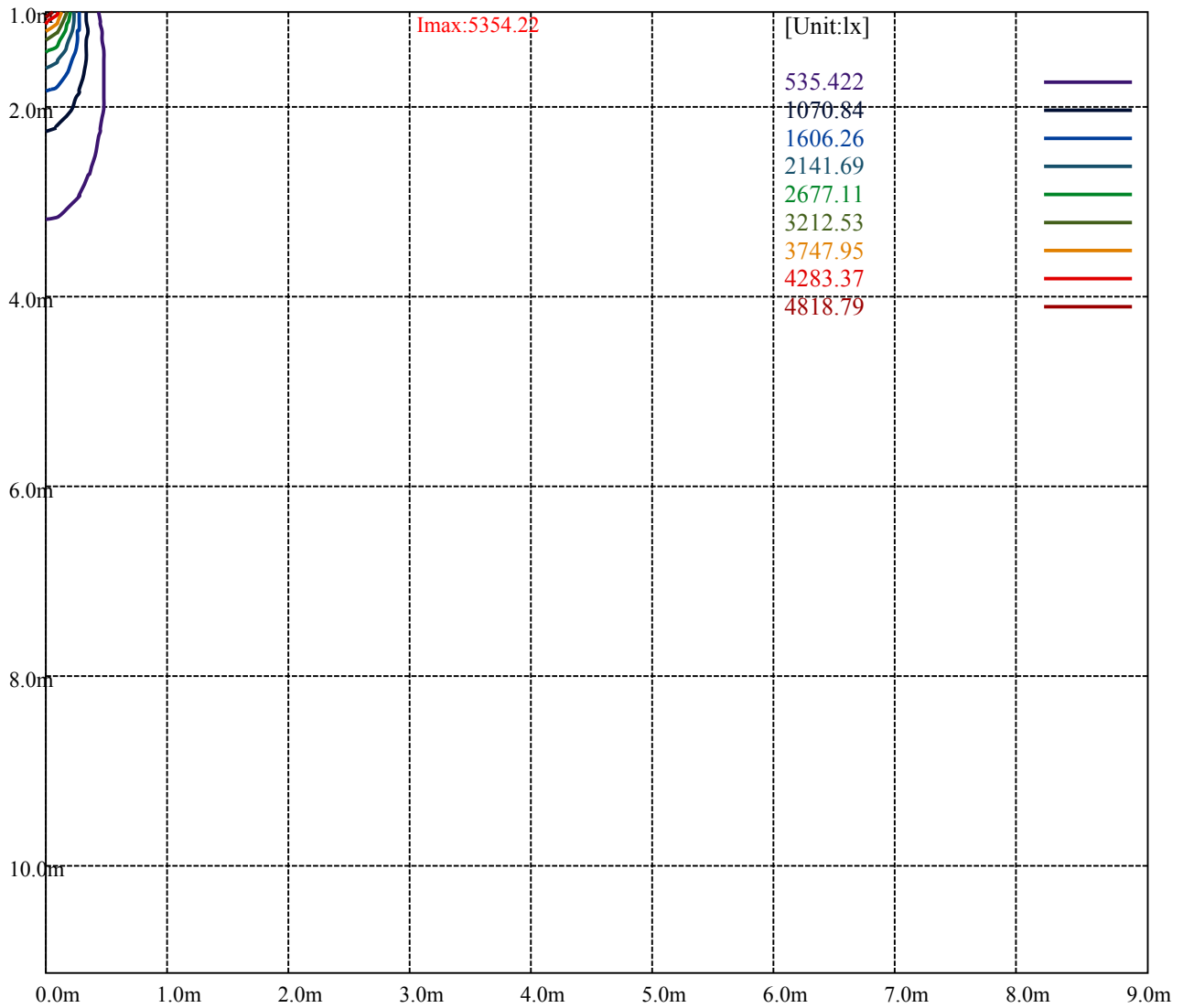
Road

Imax:5354.22

(10%Imax)	535.422	—
(20%Imax)	1070.84	—
(30%Imax)	1606.26	—
(40%Imax)	2141.69	—
(50%Imax)	2677.11	—
(60%Imax)	3212.53	—
(70%Imax)	3747.95	—
(80%Imax)	4283.37	—
(90%Imax)	4818.79	—



- (10%Emax) 133.8553
- (20%Emax) 267.71
- (30%Emax) 401.565
- (40%Emax) 535.42
- (50%Emax) 669.2775
- (60%Emax) 803.1325
- (70%Emax) 936.9875
- (80%Emax) 1070.843
- (90%Emax) 1204.698



Luminance Table

γ	45	50	55	60	65	70	75	80	85
C0	0	0	0	0	0	0	0	0	0
C45	0	0	0	0	0	0	0	0	0
C90	0	0	0	0	0	0	0	0	0

L(Hor)(65)	L(Ver)(65)	L45(65)	L(Hor)(75)	L(Ver)(75)	L45(75)	L(Hor)(85)	L(Ver)(85)	L45(85)
0	0	0	0	0	0	0	0	0

Glare Table

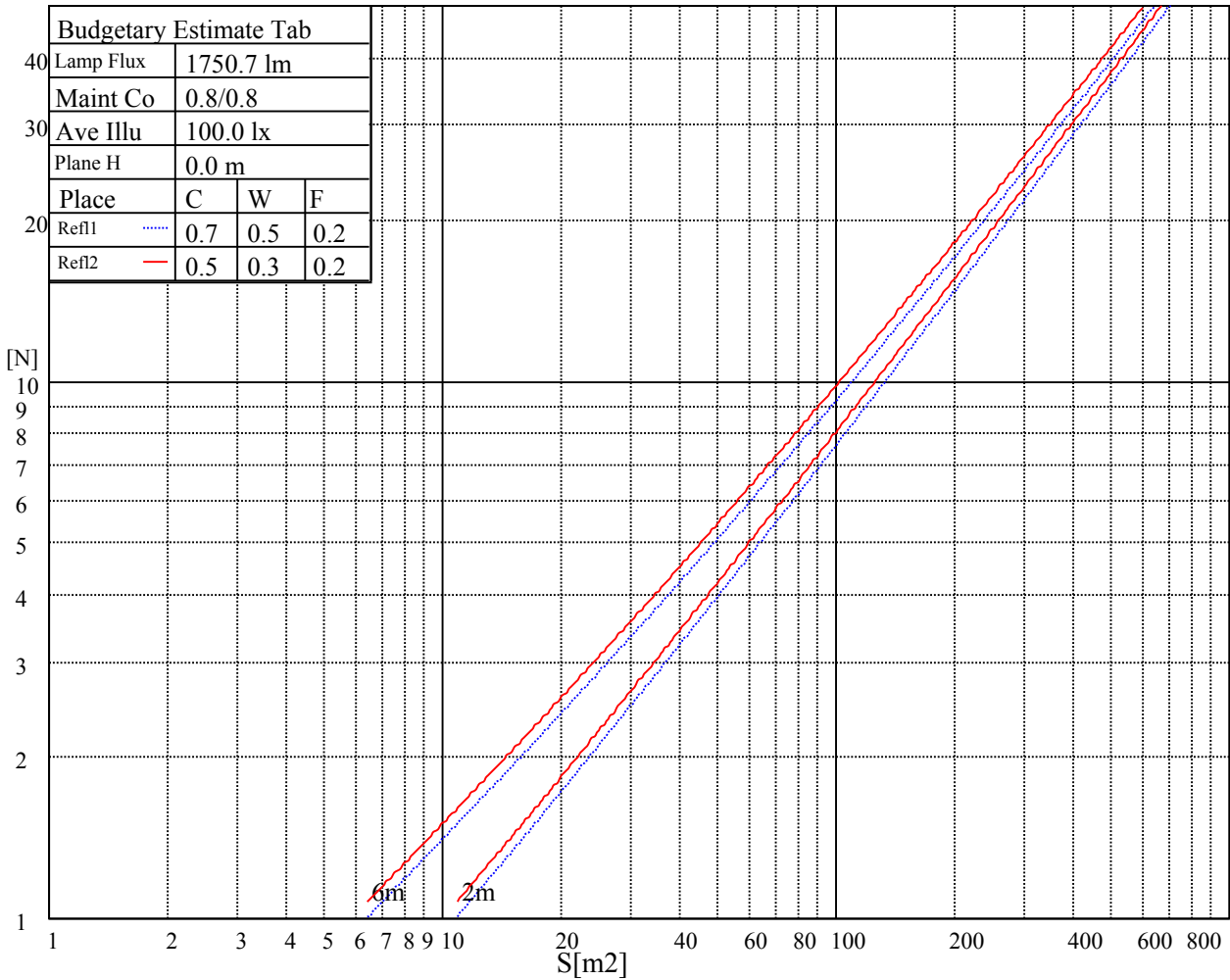
Glare	Quality	Service Values Illuminance(lx)							
1.15	A	2000	1000	500	<=300				
1.5	B		2000	1000	500	<=300			
1.85	C			2000	1000	500	<=300		
2.2	D				2000	1000	500	<=300	
2.55	E					2000	1000	500	<=300
		a	b	c	d	e	f	g	h

Luminance Limiting Curve

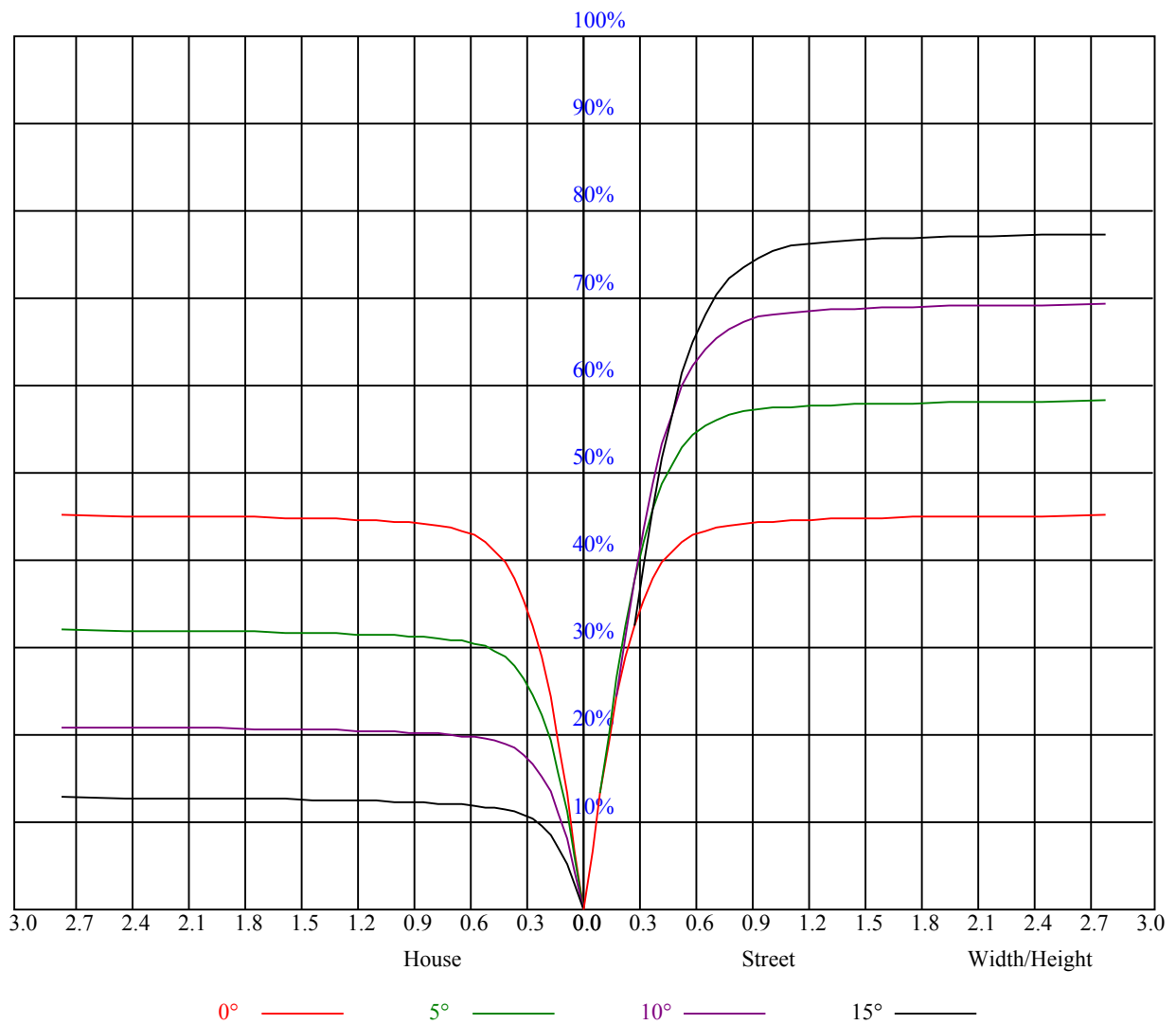


Illumination assessment according UGR											
Rf of Ceiling	70	70	50	50	30	70	70	50	50	30	
Rf of Wall	50	30	50	30	30	50	30	50	30	30	
Rf of Floor	20	20	20	20	20	20	20	20	20	20	
Room dimensions		Viewed crosswise					Viewed endwise				
X	Y										
2H	2H	非数字	非数字	非数字	非数字	非数字	非数字	非数字	非数字	非数字	
	3H	非数字	非数字	非数字	非数字	非数字	非数字	非数字	非数字	非数字	
	4H	非数字	非数字	非数字	非数字	非数字	非数字	非数字	非数字	非数字	
	6H	非数字	非数字	非数字	非数字	非数字	非数字	非数字	非数字	非数字	
	8H	非数字	非数字	非数字	非数字	非数字	非数字	非数字	非数字	非数字	
4H	12H	非数字	非数字	非数字	非数字	非数字	非数字	非数字	非数字	非数字	
	2H	非数字	非数字	非数字	非数字	非数字	非数字	非数字	非数字	非数字	
	3H	非数字	非数字	非数字	非数字	非数字	非数字	非数字	非数字	非数字	
	4H	非数字	非数字	非数字	非数字	非数字	非数字	非数字	非数字	非数字	
	6H	非数字	非数字	非数字	非数字	非数字	非数字	非数字	非数字	非数字	
8H	8H	非数字	非数字	非数字	非数字	非数字	非数字	非数字	非数字	非数字	
	12H	非数字	非数字	非数字	非数字	非数字	非数字	非数字	非数字	非数字	
	4H	非数字	非数字	非数字	非数字	非数字	非数字	非数字	非数字	非数字	
	6H	非数字	非数字	非数字	非数字	非数字	非数字	非数字	非数字	非数字	
	8H	非数字	非数字	非数字	非数字	非数字	非数字	非数字	非数字	非数字	
12H	12H	非数字	非数字	非数字	非数字	非数字	非数字	非数字	非数字	非数字	
	4H	非数字	非数字	非数字	非数字	非数字	非数字	非数字	非数字	非数字	
	6H	非数字	非数字	非数字	非数字	非数字	非数字	非数字	非数字	非数字	
	8H	非数字	非数字	非数字	非数字	非数字	非数字	非数字	非数字	非数字	
Variation with the observer position at spacings:											
S = 1.0H		非数字/非数字					非数字/非数字				
S = 1.5H		非数字/非数字					非数字/非数字				
S = 2.0H		非数字/非数字					非数字/非数字				
Standard tables:		BK0					BK0				
Uncorrected UGR		负无穷大					负无穷大				

UGR calculation is based on CIE Publ. 117 ,S/H = 0.25



RHOCC	80			70			50			30			10			0
RHOW	50	30	10	50	30	10	50	30	10	50	30	10	50	30	10	0
RCR	COEFFICIENTS OF UTILIZATION RHOF=20 CU															
0	1.08	1.08	1.08	1.06	1.06	1.06	1.01	1.01	1.01	0.97	0.97	0.97	0.93	0.93	0.93	0.91
1	1.02	1.00	0.98	1.00	0.98	0.96	0.96	0.95	0.93	0.93	0.92	0.90	0.90	0.89	0.88	0.86
2	0.96	0.93	0.90	0.94	0.92	0.89	0.92	0.89	0.87	0.89	0.87	0.85	0.86	0.85	0.84	0.82
3	0.91	0.87	0.84	0.90	0.86	0.83	0.87	0.85	0.82	0.85	0.83	0.81	0.83	0.81	0.80	0.78
4	0.87	0.82	0.79	0.86	0.82	0.79	0.84	0.81	0.78	0.82	0.79	0.77	0.80	0.78	0.76	0.75
5	0.83	0.78	0.75	0.82	0.78	0.75	0.80	0.77	0.74	0.79	0.76	0.74	0.78	0.75	0.73	0.72
6	0.79	0.75	0.72	0.79	0.74	0.71	0.77	0.74	0.71	0.76	0.73	0.71	0.75	0.72	0.70	0.69
7	0.76	0.72	0.69	0.76	0.71	0.68	0.74	0.71	0.68	0.73	0.70	0.68	0.73	0.70	0.67	0.66
8	0.73	0.69	0.66	0.73	0.69	0.66	0.72	0.68	0.65	0.71	0.68	0.65	0.70	0.67	0.65	0.64
9	0.70	0.66	0.63	0.70	0.66	0.63	0.69	0.66	0.63	0.69	0.65	0.63	0.68	0.65	0.63	0.62
10	0.68	0.64	0.61	0.68	0.64	0.61	0.67	0.63	0.61	0.66	0.63	0.61	0.66	0.63	0.61	0.60



Intensity data(cd)

C/γ(°)	0.0	1.0	2.0	3.0	4.0	5.0	6.0	7.0	8.0
0.0	5345.50	5272.98	5184.97	5008.95	4830.71	4585.49	4370.17	4138.79	3832.68
45.0	5377.05	5346.05	5289.04	5150.10	5001.20	4837.90	4643.06	4362.42	4127.72
90.0	5325.57	5245.31	5098.07	4945.84	4760.41	4551.17	4286.58	4047.46	3796.70
135.0	5368.75	5322.25	5243.09	5121.87	4930.35	4748.23	4532.35	4311.49	4023.65
180.0	5345.50	5379.82	5345.50	5272.43	5165.60	4997.88	4811.33	4612.06	4389.54
225.0	5377.05	5352.69	5260.25	5148.99	5007.84	4801.37	4610.95	4380.68	4083.44
270.0	5325.57	5367.09	5348.26	5280.73	5179.99	5016.70	4837.90	4652.47	4387.33
315.0	5368.75	5349.93	5291.25	5176.12	5049.91	4877.76	4635.31	4422.20	4185.29
360.0	5345.50	5272.98	5184.97	5008.95	4830.71	4585.49	4370.17	4138.79	3832.68
C/γ(°)	9.0	10.0	11.0	12.0	13.0	14.0	15.0	16.0	17.0
0.0	3580.82	3328.41	3068.80	2759.38	2516.93	2296.62	2089.60	1851.58	1683.30
45.0	3888.59	3581.38	3342.25	3024.52	2778.75	2538.52	2313.23	2051.96	1859.88
90.0	3550.38	3233.76	2976.36	2674.13	2439.99	2230.75	1976.68	1787.92	1623.52
135.0	3789.51	3539.31	3232.65	2976.92	2737.24	2443.31	2221.89	2019.85	1791.24
180.0	4106.13	3872.54	3629.54	3304.06	3038.36	2741.11	2497.55	2276.14	2069.67
225.0	3834.90	3587.47	3267.52	3010.13	2772.11	2541.84	2262.86	2055.28	1862.10
270.0	4157.06	3930.11	3678.80	3363.28	3099.25	2852.92	2611.03	2337.03	2122.26
315.0	3948.37	3642.27	3386.53	3129.69	2878.94	2582.25	2354.74	2143.29	1900.29
360.0	3580.82	3328.41	3068.80	2759.38	2516.93	2296.62	2089.60	1851.58	1683.30
C/γ(°)	18.0	19.0	20.0	21.0	22.0	23.0	24.0	25.0	26.0
0.0	1531.63	1361.70	1097.77	1097.77	990.88	888.37	796.26	686.16	604.96
45.0	1689.39	1538.28	1360.59	1233.83	1118.14	1008.54	882.89	786.57	672.55
90.0	1443.62	1226.08	1079.06	1079.06	972.95	854.00	760.72	675.04	595.16
135.0	1629.06	1481.26	1314.09	1191.21	1079.95	979.21	854.66	762.77	680.30
180.0	1829.44	1657.84	1499.53	1360.04	1211.69	1107.07	996.36	897.84	789.34
225.0	1689.95	1485.69	1246.01	1101.20	1073.97	972.18	853.39	764.88	680.30
270.0	1927.41	1703.23	1532.19	1350.07	1227.19	1117.04	975.33	876.80	789.90
315.0	1723.16	1568.17	1389.93	1085.15	1085.15	1006.44	904.81	813.42	723.80
360.0	1531.63	1361.70	1097.77	1097.77	990.88	888.37	796.26	686.16	604.96
C/γ(°)	27.0	28.0	29.0	30.0	31.0	32.0	33.0	34.0	35.0
0.0	525.86	453.51	373.64	318.12	268.80	226.67	182.33	152.28	127.09
45.0	587.86	510.91	422.90	362.01	309.98	285.62	285.62	176.74	148.29
90.0	499.18	430.04	354.82	301.79	246.10	207.41	173.87	144.92	115.36
135.0	596.71	502.61	433.42	370.32	302.78	290.05	290.05	168.72	140.65
180.0	705.20	605.57	531.95	458.88	371.98	316.62	291.16	291.16	176.63
225.0	578.28	502.11	429.16	362.34	292.99	245.44	205.03	172.21	137.72
270.0	700.22	600.03	527.52	456.11	388.03	325.48	279.54	279.54	181.67
315.0	620.79	543.46	470.45	401.26	328.19	276.27	232.26	187.10	156.76
360.0	525.86	453.51	373.64	318.12	268.80	226.67	182.33	152.28	127.09
C/γ(°)	36.0	37.0	38.0	39.0	40.0	41.0	42.0	43.0	44.0
0.0	101.63	85.96	73.07	60.94	53.75	46.83	42.51	38.91	35.98
45.0	117.90	98.58	83.14	70.63	58.67	51.76	46.22	41.79	37.42
90.0	96.76	81.76	69.63	60.50	51.92	46.61	42.35	38.19	35.20
135.0	116.85	93.44	78.66	67.03	58.01	49.60	44.56	40.63	37.42
180.0	147.57	121.72	102.24	82.98	69.97	60.39	52.75	45.61	41.29
225.0	114.47	96.43	78.60	67.53	58.84	50.87	45.94	41.90	37.81
270.0	147.02	122.66	101.80	83.20	70.30	58.90	51.76	46.61	42.35
315.0	124.66	104.34	87.57	71.02	61.00	52.97	46.88	41.18	37.70
360.0	101.63	85.96	73.07	60.94	53.75	46.83	42.51	38.91	35.98

Intensity data(cd)

C/γ(°)	45.0	46.0	47.0	48.0	49.0	50.0	51.0	52.0	53.0
0.0	33.32	30.39	28.23	26.46	24.80	22.97	21.70	20.31	19.37
45.0	34.49	31.33	29.17	27.12	24.91	23.41	22.09	20.87	19.60
90.0	32.60	29.84	27.84	25.68	24.08	22.64	21.42	20.09	19.15
135.0	33.99	31.55	29.39	27.01	25.30	23.47	22.14	20.92	19.93
180.0	37.86	34.32	31.83	29.12	27.18	25.46	23.97	22.31	21.03
225.0	34.93	32.38	30.22	27.84	26.13	24.52	23.08	21.48	20.31
270.0	38.14	35.15	32.55	30.33	27.79	26.07	24.47	23.08	21.48
315.0	34.76	32.27	29.50	27.57	25.79	23.86	22.42	21.20	19.82
360.0	33.32	30.39	28.23	26.46	24.80	22.97	21.70	20.31	19.37
C/γ(°)	54.0	55.0	56.0	57.0	58.0	59.0	60.0	61.0	62.0
0.0	18.49	17.77	16.94	16.38	15.72	15.22	14.78	14.39	13.89
45.0	18.65	17.93	17.21	16.44	15.94	15.44	14.89	14.45	13.95
90.0	18.27	17.55	16.77	16.22	15.67	15.17	14.67	14.23	13.73
135.0	18.76	17.99	17.27	16.72	16.00	15.44	15.00	14.45	14.06
180.0	19.98	19.04	17.93	17.21	16.66	16.00	15.50	15.00	14.50
225.0	19.37	18.27	17.49	16.77	16.22	15.67	15.22	14.67	14.23
270.0	20.37	19.21	18.32	17.60	16.83	16.27	15.78	15.28	14.72
315.0	18.93	18.10	17.16	16.61	16.05	15.55	14.95	14.50	14.17
360.0	18.49	17.77	16.94	16.38	15.72	15.22	14.78	14.39	13.89
C/γ(°)	63.0	64.0	65.0	66.0	67.0	68.0	69.0	70.0	71.0
0.0	13.56	13.17	12.84	12.51	12.07	11.73	11.35	11.07	10.74
45.0	13.56	13.23	12.90	12.51	12.12	11.79	11.51	11.13	10.85
90.0	13.34	13.01	12.57	12.23	11.85	11.51	11.13	10.85	10.52
135.0	13.67	13.17	12.84	12.57	12.12	11.79	11.46	11.13	10.79
180.0	14.06	13.67	13.23	12.90	12.57	12.12	11.79	11.46	11.18
225.0	13.84	13.45	13.01	12.68	12.29	11.96	11.57	11.29	10.85
270.0	14.34	13.89	13.51	13.06	12.73	12.34	11.90	11.57	11.18
315.0	13.73	13.28	13.01	12.68	12.23	11.85	11.51	11.18	10.96
360.0	13.56	13.17	12.84	12.51	12.07	11.73	11.35	11.07	10.74
C/γ(°)	72.0	73.0	74.0	75.0	76.0	77.0	78.0	79.0	80.0
0.0	10.41	10.13	9.85	9.52	9.30	9.08	8.86	8.64	8.41
45.0	10.57	10.19	9.96	9.74	9.41	9.19	8.97	8.69	8.52
90.0	10.30	9.96	9.69	9.47	9.13	8.91	8.69	8.47	8.30
135.0	10.46	10.19	9.85	9.58	9.35	9.13	8.80	8.64	8.36
180.0	10.79	10.52	10.24	9.96	9.63	9.35	9.08	8.86	8.64
225.0	10.57	10.30	9.96	9.69	9.41	9.13	8.91	8.69	8.47
270.0	10.90	10.57	10.19	9.91	9.69	9.41	9.08	8.86	8.69
315.0	10.63	10.24	10.02	9.74	9.47	9.13	8.91	8.69	8.52
360.0	10.41	10.13	9.85	9.52	9.30	9.08	8.86	8.64	8.41
C/γ(°)	81.0	82.0	83.0	84.0	85.0	86.0	87.0	88.0	89.0
0.0	8.25	8.08	7.86	7.69	7.47	7.36	7.20	7.14	6.92
45.0	8.30	8.08	7.92	7.75	7.58	7.42	7.25	7.14	6.97
90.0	8.08	7.92	7.69	7.47	7.36	7.20	7.09	6.92	6.81
135.0	8.19	8.03	7.80	7.58	7.42	7.25	7.14	7.09	6.75
180.0	8.36	8.19	8.08	7.86	7.64	7.47	7.31	7.20	7.14
225.0	8.25	8.08	7.92	7.69	7.53	7.42	7.25	7.20	6.92
270.0	8.47	8.25	8.08	7.92	7.69	7.47	7.36	7.20	7.14
315.0	8.30	8.08	7.97	7.75	7.58	7.42	7.25	7.14	6.97
360.0	8.25	8.08	7.86	7.69	7.47	7.36	7.20	7.14	6.92

Intensity data(cd)

C/γ(°)	90.0
0.0	6.92
45.0	6.86
90.0	6.86
135.0	6.81
180.0	6.86
225.0	6.92
270.0	6.81
315.0	6.81
360.0	6.92